

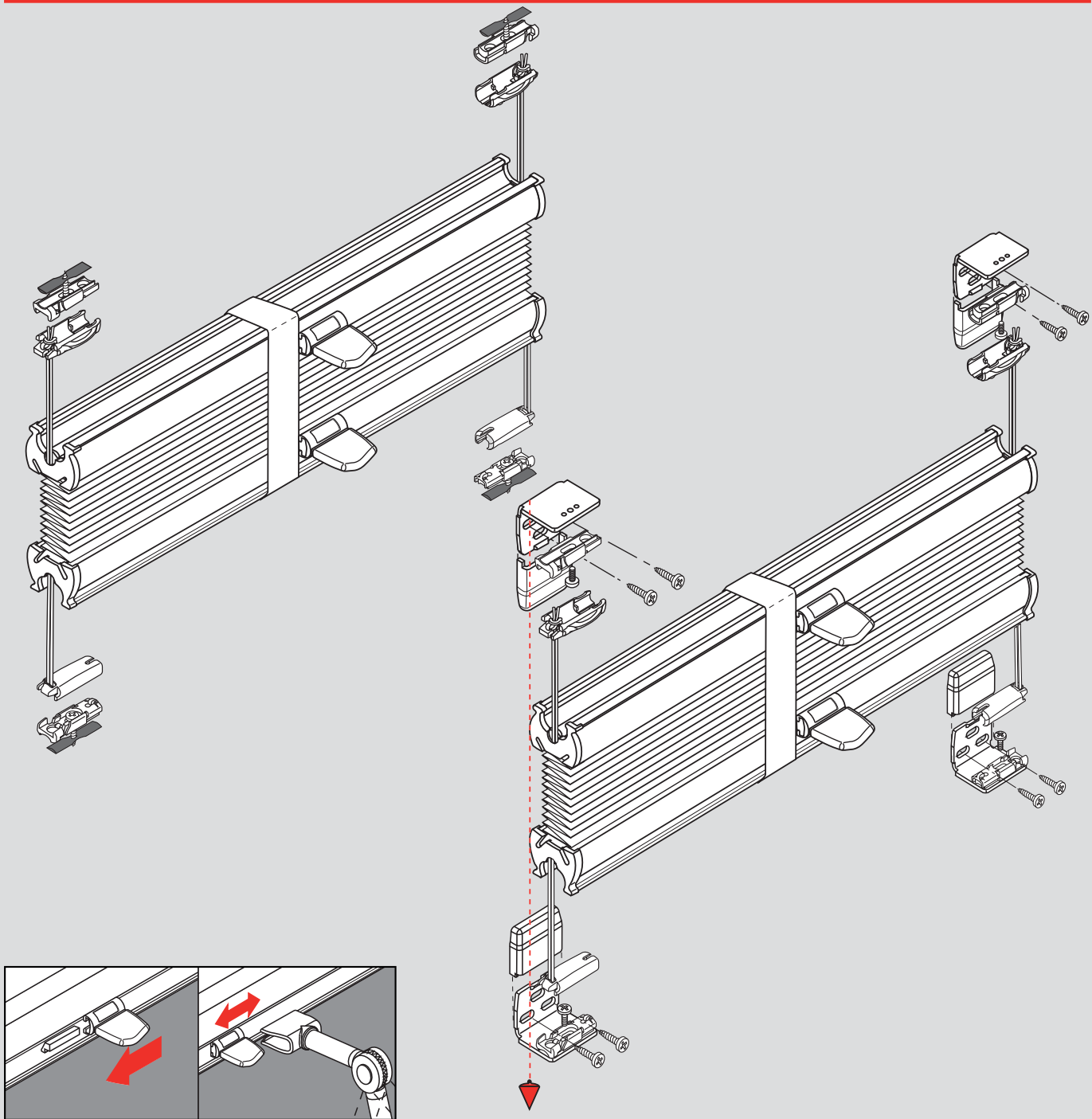
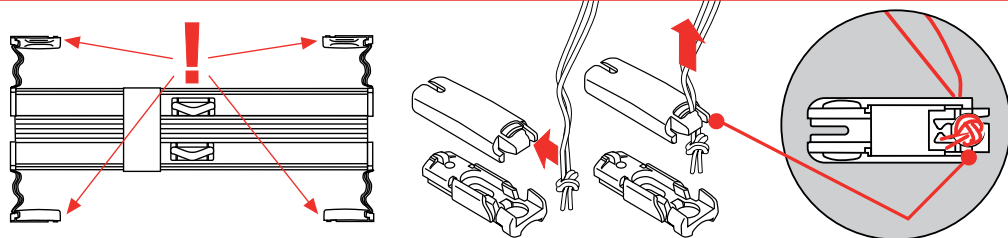
Plissé „Typ VS2“

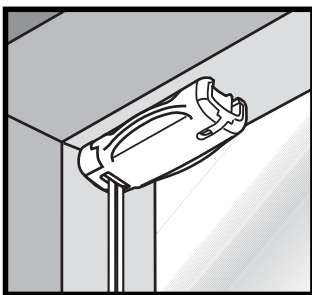


Důležité! Tento návod je platný současně s instrukcemi na údržbu!
Wichtig! Bitte mit der Pflegeanleitung aufbewahren!
Important! Please keep together with care instructions!
Belangrijk! A.u.b. bij de gebruiksaanwijzing bewaren!

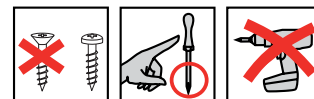
Important! Conserver ensemble avec les conseils d'entretien!
Importante! Conservare con le istruzioni per la manutenzione!
Ważne! Proszę przechowywać z instrukcją pielęgnacji!
Внимание! Хранить вместе с инструкцией по эксплуатации!

Důležité!
Wichtig!
Important!
Let op!
Importante!
Ważne!
Внимание!

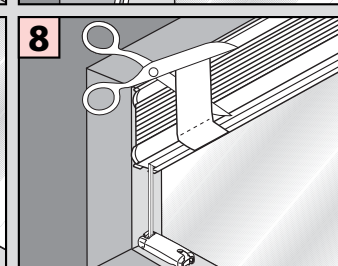
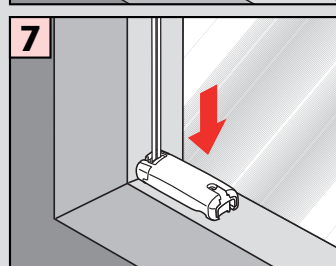
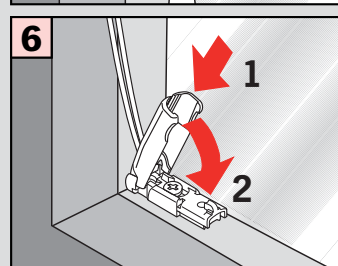
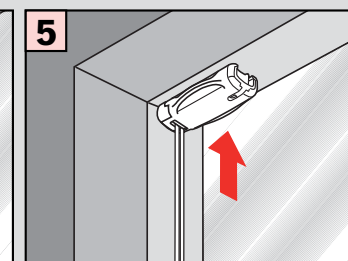
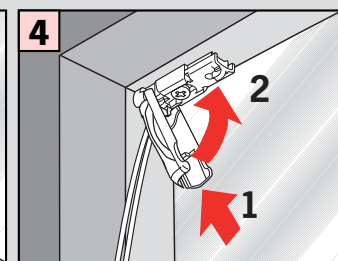
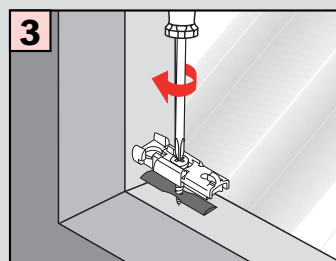
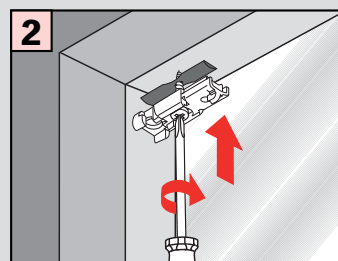
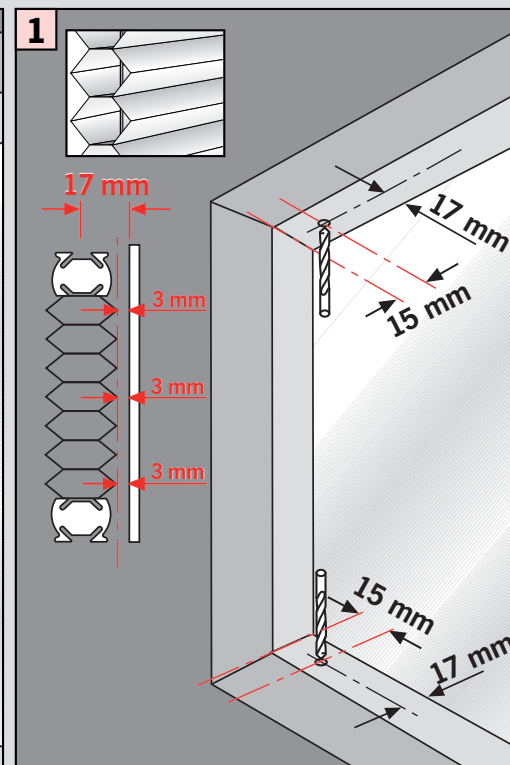
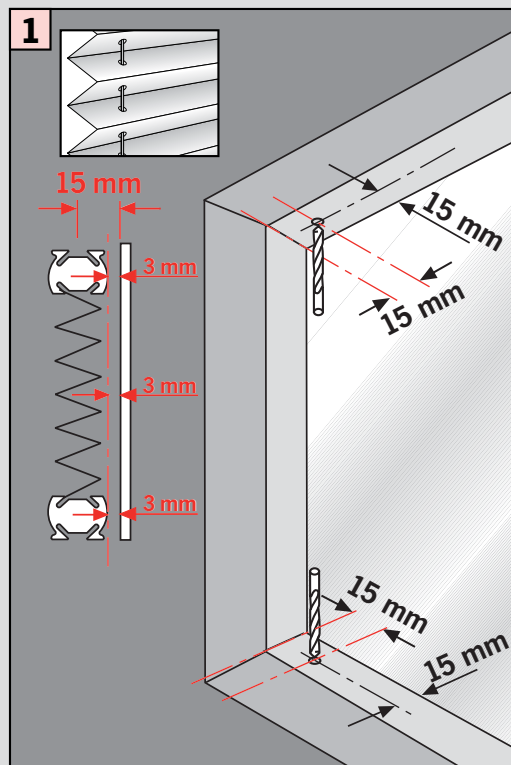




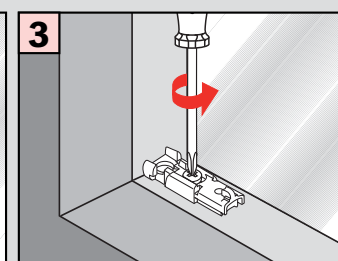
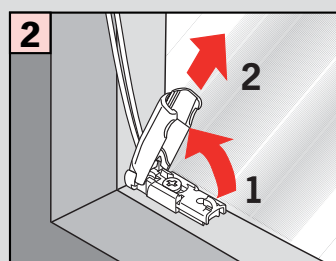
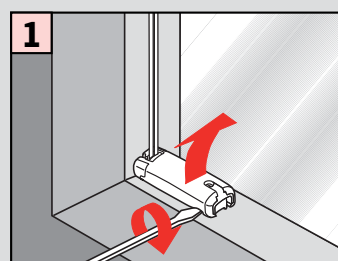
Montáž mezi zasklívací lišty
Falzmontage
Top fixing
Bevestiging in de sponning
Dans la feuillure
Montaggio nella piegatura
Montaż w świetle szyby
Монтаж в проем

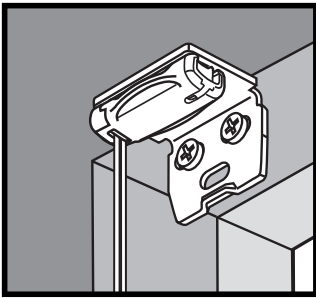


Montáž • Montage
Fitting • Montaggio
Montaż • Монтаж



Demontáž • Demontage • Disassembly • Démontage • Smontaggio • Demontaž • Демонтаж





Montáž na rám okna (pomocí stěnového úhelníku)

Winkelmontage

Face fixing

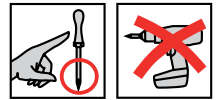
Bevestiging met hoeksteun

Avec equerre de fixation

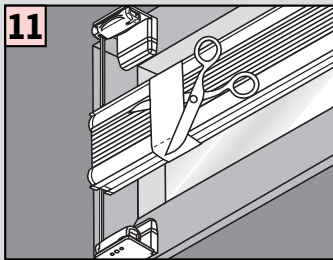
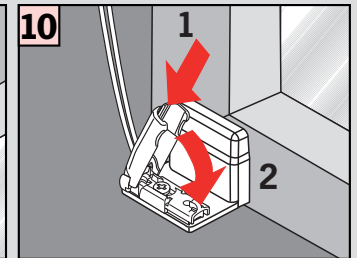
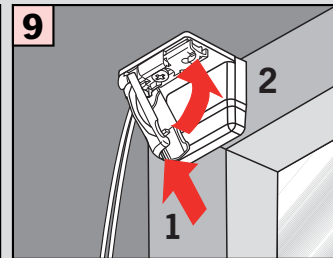
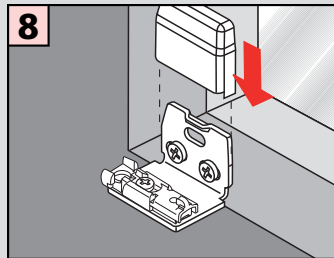
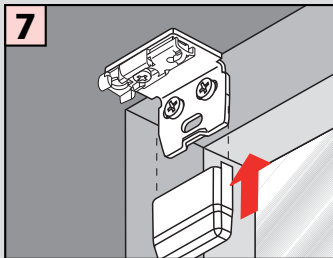
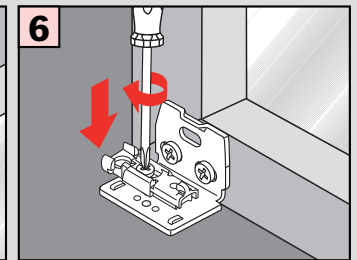
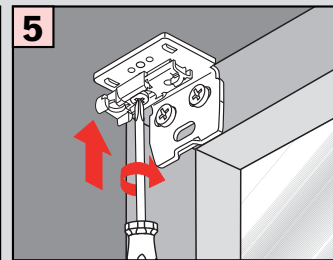
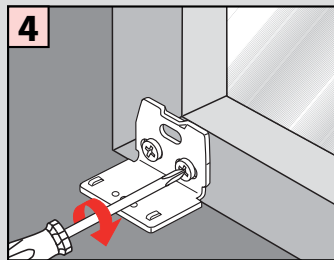
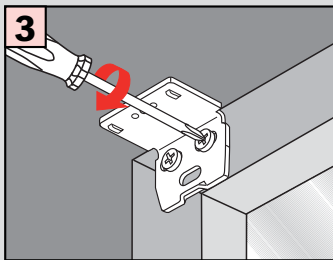
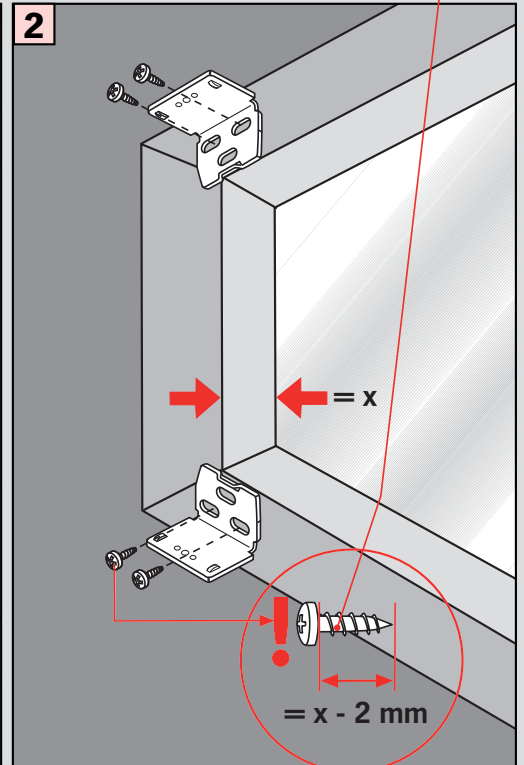
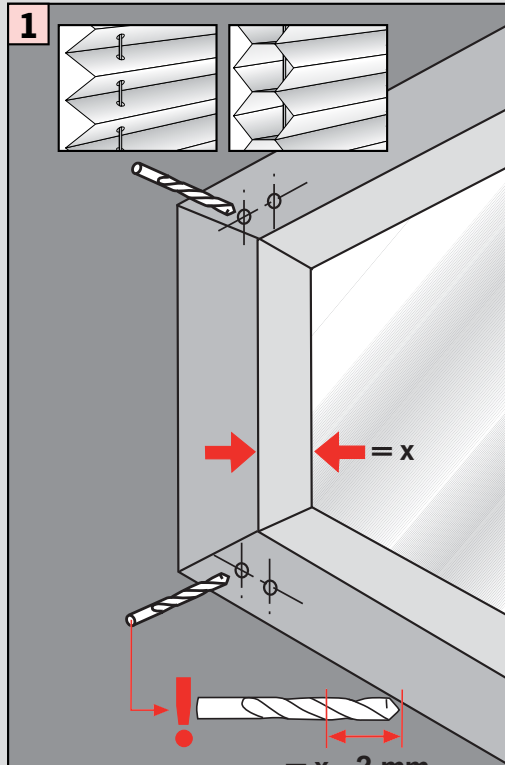
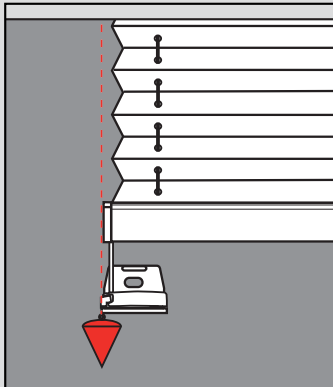
Montaggio mediante angolare

Montaż frontalny (nawierzchniowy)

Монтаж на проем



Montáž • Montage
Fitting • Montaggio
Montaż • Монтаж



Demontáž • Demontage • Disassembly • Démontage
Smontaggio • Demontaž • Демонтаж

